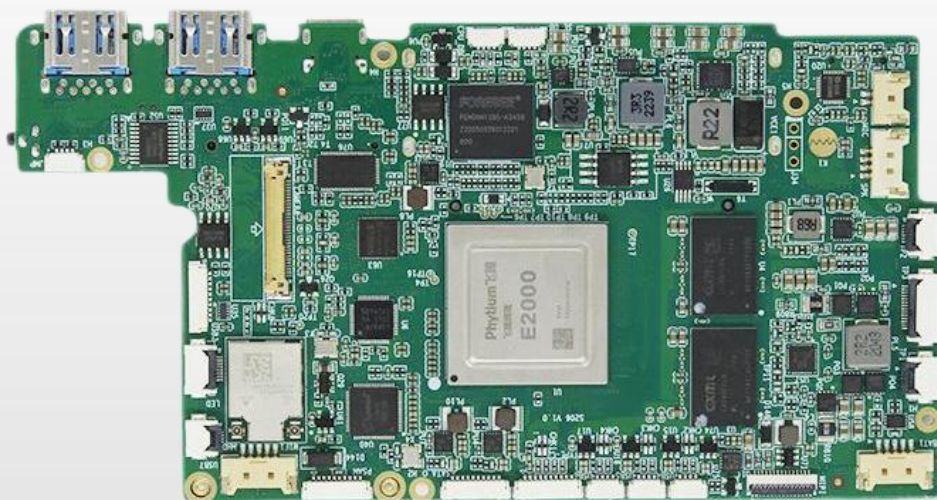
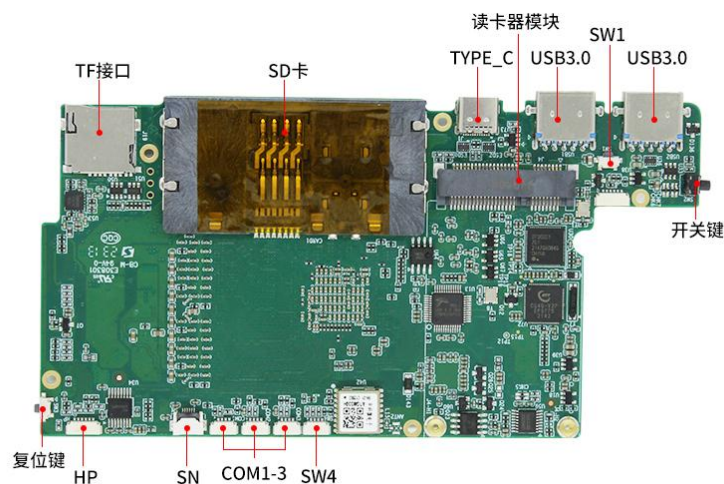


产品型号 SBM-S206E



产品特性

- ▶ 采用飞腾腾珑E2000Q/4核处理器，主频2.0GHz
- ▶ LPDDR4 CXDB5CCAM-MK(8GB或4GB可选)
- ▶ eMMC 256GB(容量可选)
- ▶ 主板1个MIPI显示接口（最高支持1920*1080 @60Hz分辨率）
- ▶ 4个USB2.0，3个USB3.0，1个Type-C(全功能3.0) COM*3
- ▶ COM*3
- ▶ TYPE_C+电池 供电



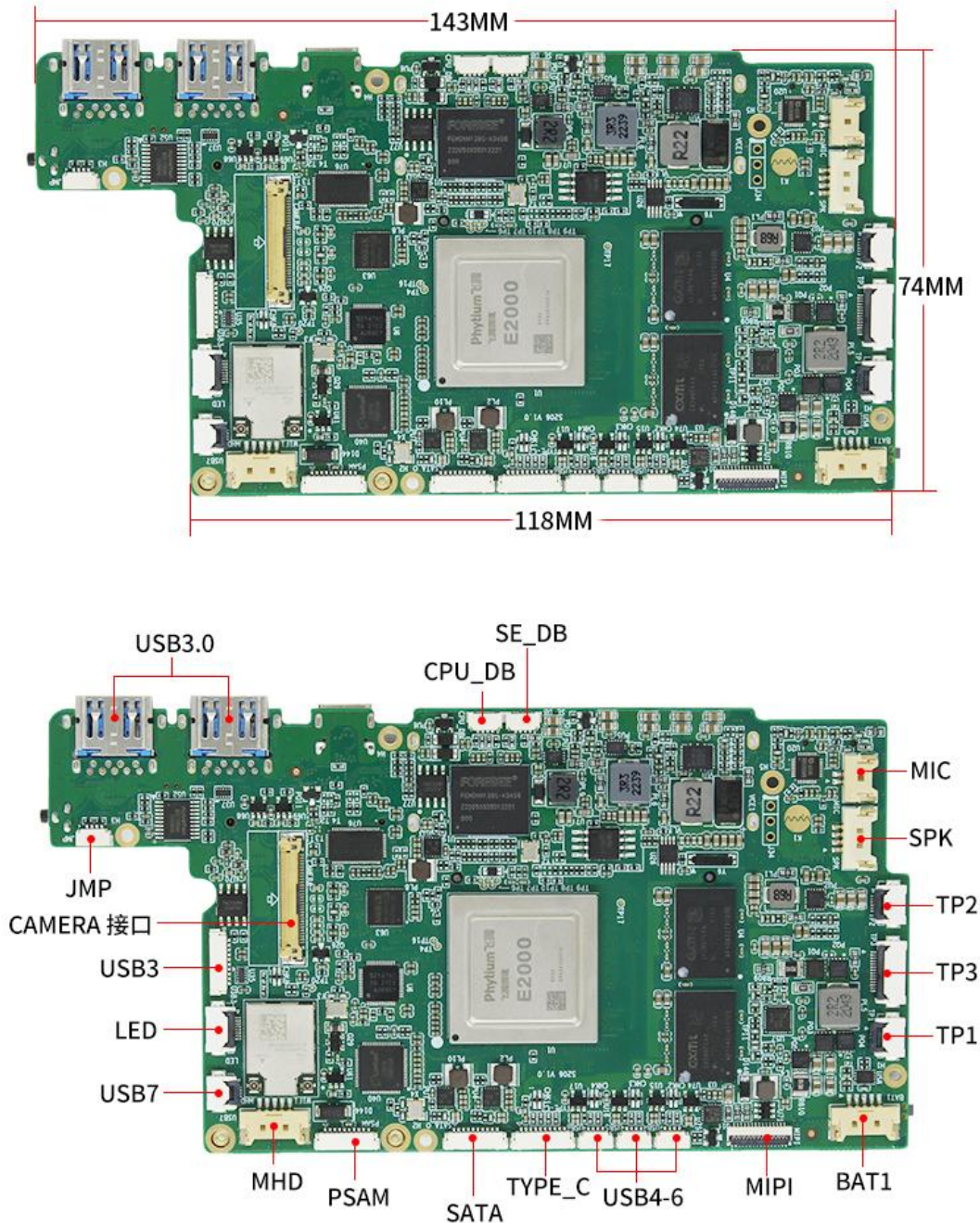
 **技术参数**

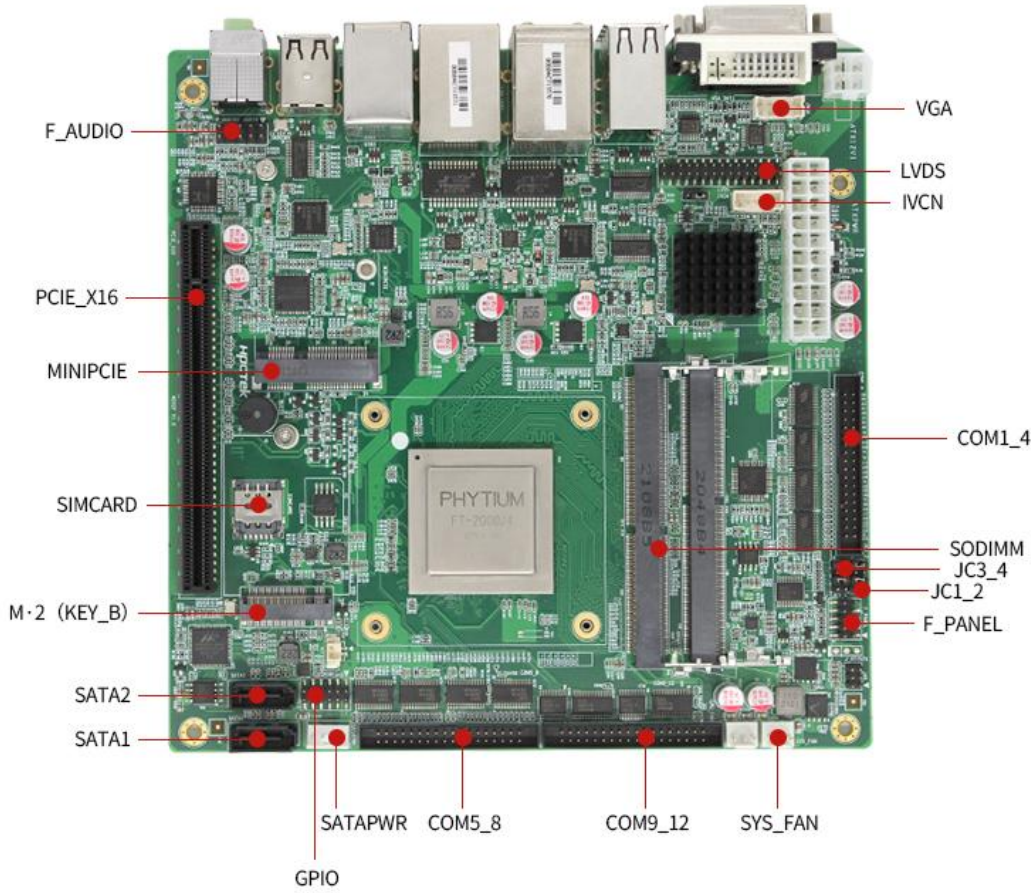
SBM-S206E

CPU	飞腾腾珑E2000Q四核CPU处理器，主频2.0GHz，功耗11W
内存	LPDDR4 CXDB5CCAM-MK(8GB或4GB可选)
存储	256GB(容量可选)
声卡	ES8336 耳麦（听录二合一）+功放
以太网	WIFI(2.4G,5G)802.11 a/b/g/n/ac网卡
显示	MIPI显示接口 最高支持1920*1080 @60Hz分辨率
触摸屏	两路I2C接口，支持电磁 + 电容双触控
无线	板载WIFI、Bluetooth模块，WIFI(2.4G,5G)802.11 a/b/g/n/ac;Bluetooth 5.1（支持BLE、SBC、AAC，支持LDAC高清音频）
摄像头	提供双目+广角三摄像头合一接口（双目为USB接口，广角为MIPI接口）
按键	电源；音量
传感器	重力加速传感器
COM	COM*3 串口
其它接口	Type-C*1
	4 * USB2.0
	4 * USB3.0
	1 * 1x2 PIN接口 Mic
	1 * 1x6 PIN 接口 MIC+HP
	1 * 1x4 PIN 接口 SPK（2.6W功放输出）
	GPS、北斗；TF卡槽（支持TF加密卡）
	5合1读卡模块接口（密码键盘、NFC、IC卡、磁条卡、公安验证模块）
	指纹安全算法处理器模块（大唐DMT-FAC-CG4Q）
	版型

固件	飞腾UEFI BIOS
系统	银河麒麟
供电	TYPE_C+电池 供电
工作温度	-10~50 °C
存储温度	-35~70°C
湿度	0%~90%(无冷凝)

外形尺寸





■ 内部接口定义

SN---0.5mm Pitch FPC (扩展sensor接口)					
NO.	SYMBOL	DESCRIPTION	NO.	SYMBOL	DESCRIPTION
1	GND		3	SDA	
2	GND		5	SCL	
3	INT		6	VCC	

SW4---0.8mm Pitch C型卧式WTB (扩展按键接口)					
NO.	SYMBOL	DESCRIPTION	NO.	SYMBOL	DESCRIPTION
1	PWR	电源开关	3	V-	音量调小
2	V+	音量调大	4	GND	

SW2---电源开关按键					
NO.	SYMBOL	DESCRIPTION	NO.	SYMBOL	DESCRIPTION
1	POWERSW-		3	GND	
2	GND		4	GND	

SW3---复位按键

NO.	SYMBOL	DESCRIPTION	NO.	SYMBOL	DESCRIPTION
1	RSTNTN-		3	GND	
2	GND		4	GND	

USB3---0.8mm Pitch C型卧式WTB (USB3.0接口)

NO.	SYMBOL	DESCRIPTION	NO.	SYMBOL	DESCRIPTION
1	VCC		6	RXN	
2	VCC		7	RXP	
3	DM		8	GND	
4	DP		9	TXN	
5	GND		10	TXP	

HP---0.8mm Pitch C型卧式WTB (Audio Line out/Mic接口)

NO.	SYMBOL	DESCRIPTION	NO.	SYMBOL	DESCRIPTION
1	GND		4	HP_R	
2	HP_DET		5	HP_L	HP_L
3	HP_MIC		6	GND	

LED---0.5mm Pitch FPC (扩展LED接口)

NO.	SYMBOL	DESCRIPTION	NO.	SYMBOL	DESCRIPTION
1	VCC		5	IC_Card LED	
2	BATLED		6	Magnetic LED	
3	PWRLED		7	NFC LED	
4	Finger LED		8	GND	

BAT1---1.25mm Pitch J型卧式WTB (锂电池供电接口)

NO.	SYMBOL	DESCRIPTION	NO.	SYMBOL	DESCRIPTION
1	BAT+		4	BAT-	
2	BAT+		5	BAT-	
3	TS		6&7	GND	

COM1/COM2/COM3---0.8mm Pitch C型卧式WTB (COM1/2为RS232, COM3为TTL)

NO.	SYMBOL	DESCRIPTION	NO.	SYMBOL	DESCRIPTION
1	5V		3	TX	
2	RX		4	GND	

SPK---1.25mm Pitch J型卧式WTB (2.6W喇叭接口)

NO.	SYMBOL	DESCRIPTION	NO.	SYMBOL	DESCRIPTION
1	Right_P		3	Left_N	
2	Right_N		4	Left_P	

MIC---1.25mm Pitch J型卧式WTB (Mic接口)

NO.	SYMBOL	DESCRIPTION	NO.	SYMBOL	DESCRIPTION
1	MIC+		2	MIC-	

TP1---0.5mm Pitch FPC (扩展电容触摸屏接口)

NO.	SYMBOL	DESCRIPTION	NO.	SYMBOL	DESCRIPTION
1	VCC		2	SCL	
3	SDA		4	RST	
5	INT		6	GND	

TP2---0.5mm Pitch FPC (扩展电磁触摸屏接口1)

NO.	SYMBOL	DESCRIPTION	NO.	SYMBOL	DESCRIPTION
1	INT		2	RST	
3	SDA		4	SCL	
5	VCC		6	GND	

TP3---0.5mm Pitch FPC (扩展电磁触摸屏接口2)

NO.	SYMBOL	DESCRIPTION	NO.	SYMBOL	DESCRIPTION
1	FWE		8	REST	
2	SCL		9	NC3	
3	SDA		10	VDD1	
4	PDCTB		11	NC2	
5	GPIO0		12	VDD	
6	GPIO1		13	NC1	
7	IRQ		14	GND	

MIPI---0.3mm Pitch FPC (MIPI屏接口)

NO.	SYMBOL	DESCRIPTION	NO.	SYMBOL	DESCRIPTION
1	LED+		2	LED+	
3	LED+		4	NC	
5	LED-		6	LED-	
7	LED-		8	LED-	
9	GND		10	GND	
11	D2P		12	D2N	
13	GND		14	D1P	

15	D1N		16	GND	
17	CLKP		18	CLKN	
19	GND		20	D0P	
21	D0N		22	GND	
23	D3N		24	D3N	
25	GND		26	LPTE	
27	RESET		28	GND	
29	VDDIO		30	VDD	
31	VDD				

CAMERA---0.5mm Pitch FPC (I-PEX 20455-030E-99#) (摄像头接口)

NO.	SYMBOL	DESCRIPTION	NO.	SYMBOL	DESCRIPTION
1	DOVDD		2	AVDD	
3	DVDD		4	DVP	
5	SDA		6	SLC	
7	PWDN		8	RESET	
9	GND		10	MCKL	
11	GND		12	MCKP	
13	MCKN		14	GND	
15	MDP0		16	MDN0	
17	GND		18	MDP1	
19	MDN1		20	GND	
21	GND		22	GND	
23	D+		24	D-	
25	5V_IR		26	GND	
27	GND		28	D1+	
29	D1-		30	5V_RGB	

TYPE_C2---0.8mm Pitch C型卧式WTB (Type C接口)

NO.	SYMBOL	DESCRIPTION	NO.	SYMBOL	DESCRIPTION
1	VCC		6	CC1	
2	VCC		7	3.3V	
3	VCC		8	GND	
4	DM		9	GND	
5	DP		10	GND	

SATA_O---0.8mm Pitch C型卧式WTB

NO.	SYMBOL	DESCRIPTION	NO.	SYMBOL	DESCRIPTION
1	GND		7	SCLK	
2	PSAM_TX		8	SDATA	
3	PSAM_RX		9	RX_FRAME	
4	GND		10	TX_FRAME	
5	VCC_SM		11	GND	
6	GND		12	GND	

PSAM---0.8mm Pitch C型卧式WTB					
NO.	SYMBOL	DESCRIPTION	NO.	SYMBOL	DESCRIPTION
1	SAM1_VCC		6	SAM2_VCC	
2	SAM1_IO		7	SAM2_IO	
3	SAM1_RST		8	SAM2_RST	
4	SAM1_CLK		9	SAM2_CLK	
5	GND		10	GND	

MHD---1.25mm Pitch J型卧式WTB					
NO.	SYMBOL	DESCRIPTION	NO.	SYMBOL	DESCRIPTION
1	M3_CLK		2	M3_DATA	
3	3.3VM		4&5	GND	

北京总部

公司电话：+86(0)10 -82331878/82331875

服务热线：400-800-1871

办公地址：北京市海淀区双清路3号鸿运大厦1层31078室

工厂地址：河北省廊坊市三河市燕郊开发区留山大街

创智谷产业园-1#地块-一期-4#-2-101

 了解更多信息：www.ipccore.com ,或发送邮件到：ipc@ipccore.com规格细节如有变更，恕不另行通知
东方松柏科技(北京) 有限公司，版权所有©2018